



CBLIS 2010 Circular

Dear colleagues and friends,

We have prepared the information referring to:

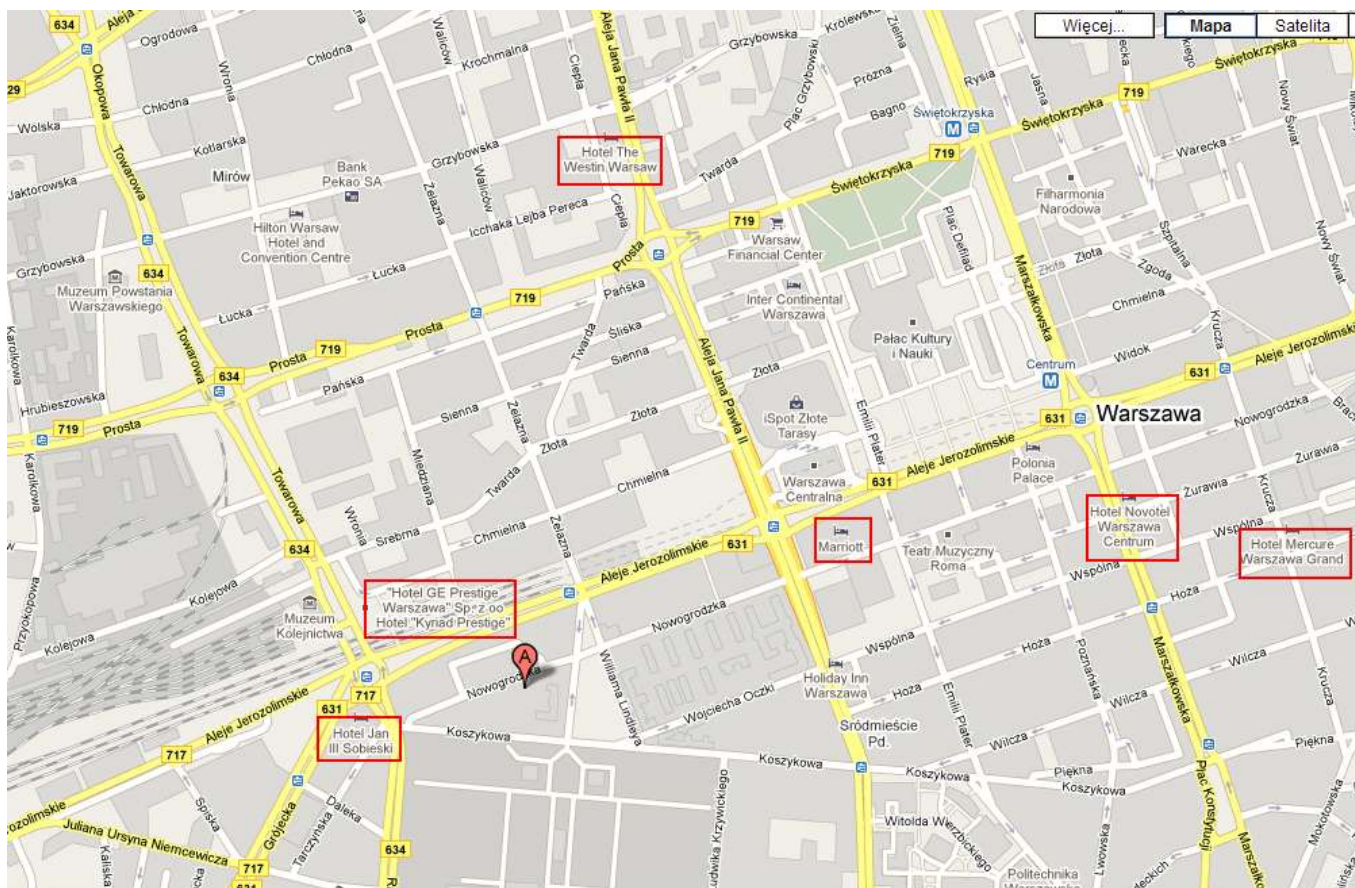
1. How to reach the conference place and hotels
2. Conference Trip
3. Important addresses and telephones

Please remember that all the information is available on CBLIS 2010 www page

<http://www.cblis2010.waw.pl>

1. HOW TO REACH THE CONFERENCE PLACE AND HOTELS

The map below shows the conference venue (point A) (73 Nowogrodzka Street) – Computer Assisted Education and Information Technology Centre (Ośrodek Edukacji Informatycznej i Zastosowań Komputerów) and some nearby hotels are marked. The nearest hotels are Sobieski Hotel, Campanille Hotel and Kyriad Prestige. They are situated at Zawiszy Square (Pl. Zawiszy). There are also marked Marriot Hotel (Aleje Jerozolimskie Street), Westin Hotel (Jan Paweł II Street) and Hotel Novotel (Marszałkowska Street).



Source: www.google.com/maps

Warsaw Chopin Airport is located in the south-west part of Warsaw, approximately 10 km from the city centre. The airport is easy of access by car, the municipal bus service or taxi. Żwirki i Wigury street is the artery leading to the airport.

The Conference place and hotels Jan III Sobieski, Campanile, Premiere Classe, Kyriad Prestige and Harctur are located on the way of line 175.

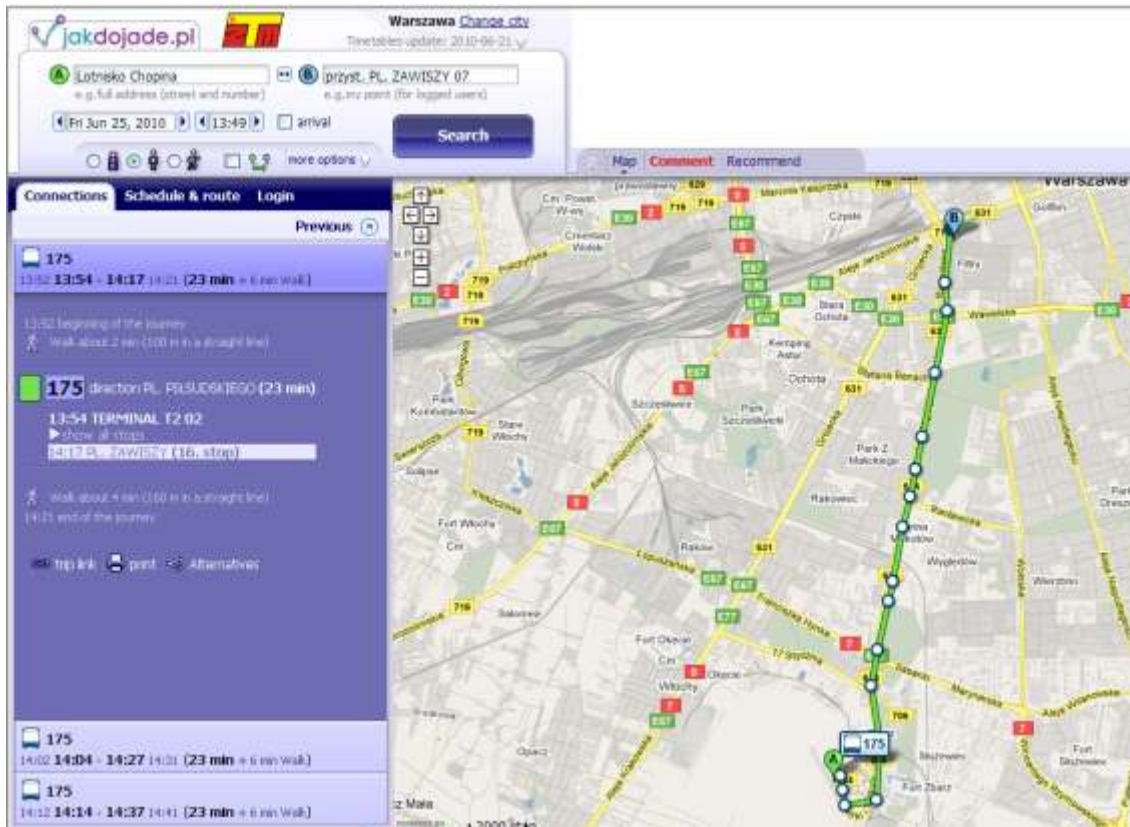
To reach the hotels you can choose bus 175 or taxi. We do not recommend non-corporate taxi services offered at Warsaw Chopin Airport, cause they are very expensive.

- TICKETS

Normal one way ticket costs 2, 80 PLN and could be purchased in the airport hall or you can buy a ticket on vehicle in tickets automates (normal price) or from a bus driver (but not always). A failure to buy a ticket from on-board vehicle staff does not release the passenger from their liability for traveling without a valid ticket.

- BUS

You should get off the **bus 175** at **PLAC ZAWISZY** – this is part of city which is close to the hotels and the conference venue (approx. 20 minutes from the airport).



Source: warszawa.jakdojade.pl

175 - LINIA ZWYKŁA

Przystanek: **TERMINAL T2 02** -->PL. PIŁSUDSKIEGO

MONDAY - FRIDAY	SATURDAY - SUNDAY
Godz. Minuty	Godz. Minuty
4 [57]	4 [58]
5 [27] [38] [50]	5 [28] [58]
6 [02] [12] [22] [32] [42] [52]	6 [28] [58]
7 [00] [08] [16] [24] [34] [44] [54]	7 [11] [23] [33] [43] [53]
8 [04] [14] [24] [34] [44] [54]	8 [03] [13] [23] [33] [43] [53]
9 [04] [14] [24] [34] [44] [54]	9 [03] [13] [23] [33] [43] [53]
10 [04] [14] [24] [34] [44] [54]	10 [03] [13] [23] [33] [43] [53]
11 [04] [14] [24] [34] [44] [54]	11 [03] [13] [23] [33] [43] [53]
12 [04] [14] [24] [34] [44] [54]	12 [03] [13] [23] [33] [43] [53]
13 [04] [14] [24] [34] [44] [54]	13 [03] [13] [23] [33] [43] [53]
14 [04] [14] [24] [34] [44] [54]	14 [03] [13] [23] [33] [43] [53]
15 [04] [14] [24] [34] [44] [54]	15 [03] [13] [23] [33] [43] [53]
16 [04] [14] [24] [34] [44] [54]	16 [03] [13] [23] [33] [43] [53]
17 [04] [14] [24] [34] [44] [54]	17 [03] [13] [23] [33] [43] [53]
18 [04] [14] [24] [34] [44] [54]	18 [03] [13] [23] [33] [43] [53]
19 [04] [14] [24] [34] [44] [54]	19 [03] [13] [23] [33] [43] [53]
20 [04] [14] [24] [34] [44] [54]	20 [06] [21] [36] [51]
21 [04] [14] [26] [41] [56]	21 [06] [21] [36] [51]
22 [11] [26] [57]	22 [06] [28] [58]
23 [26x]	

Source: www.ztm.waw.pl

- **Jan III Sobieski Hotel**

Please turn around (the Palace of Culture and Science should be behind you) and in front of you is the hotel.

- **Hotels Campanille, Premiere Classe, Kyriad Prestige**

To get these hotels you should go through the street Aleje Jerozolimskie. All these hotels are in one building.

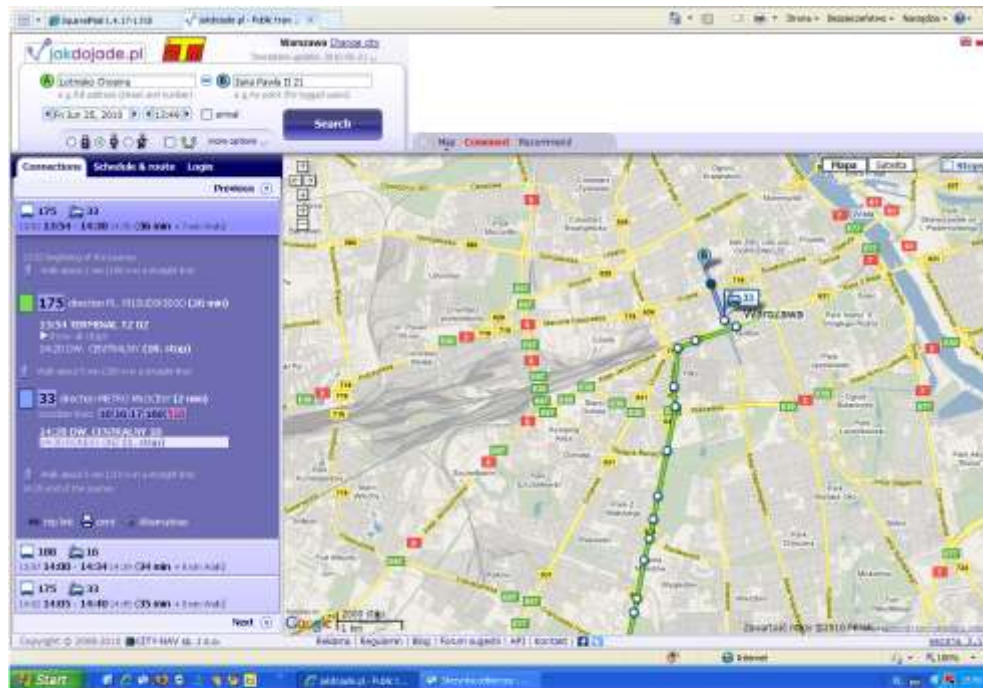
- **Harctur Hotel**

When you get off at Plac Zawiszy bus stop you have to take a tram number 7, 9 or 25. You should cross the street. There are 3 tram stops, yours is the one in the middle (in direction Okęcie). Please take a tram 7, 9 or 25 and get off on the next stop – “OCHOTA RATUSZ”. You should go on the right side of the street and go straight. Please go through the lights and then turn right to NIEMCEWICZA street. The Harctur Hotel is about 100 m.

- **Westin Hotel**

To get that hotel you should get off the line 175 at DWORZEC CENTRALNY bus stop and then go under the street and go to the tram stop (direction ŻOLIBÓRZ). You should choose

tram number 16 or 33. You should get off at the next tram stop, across the street to the left and go straight. The hotel is situated at the main street (Jana Pawła II Street).



Source: warszawa.jakdojade.pl

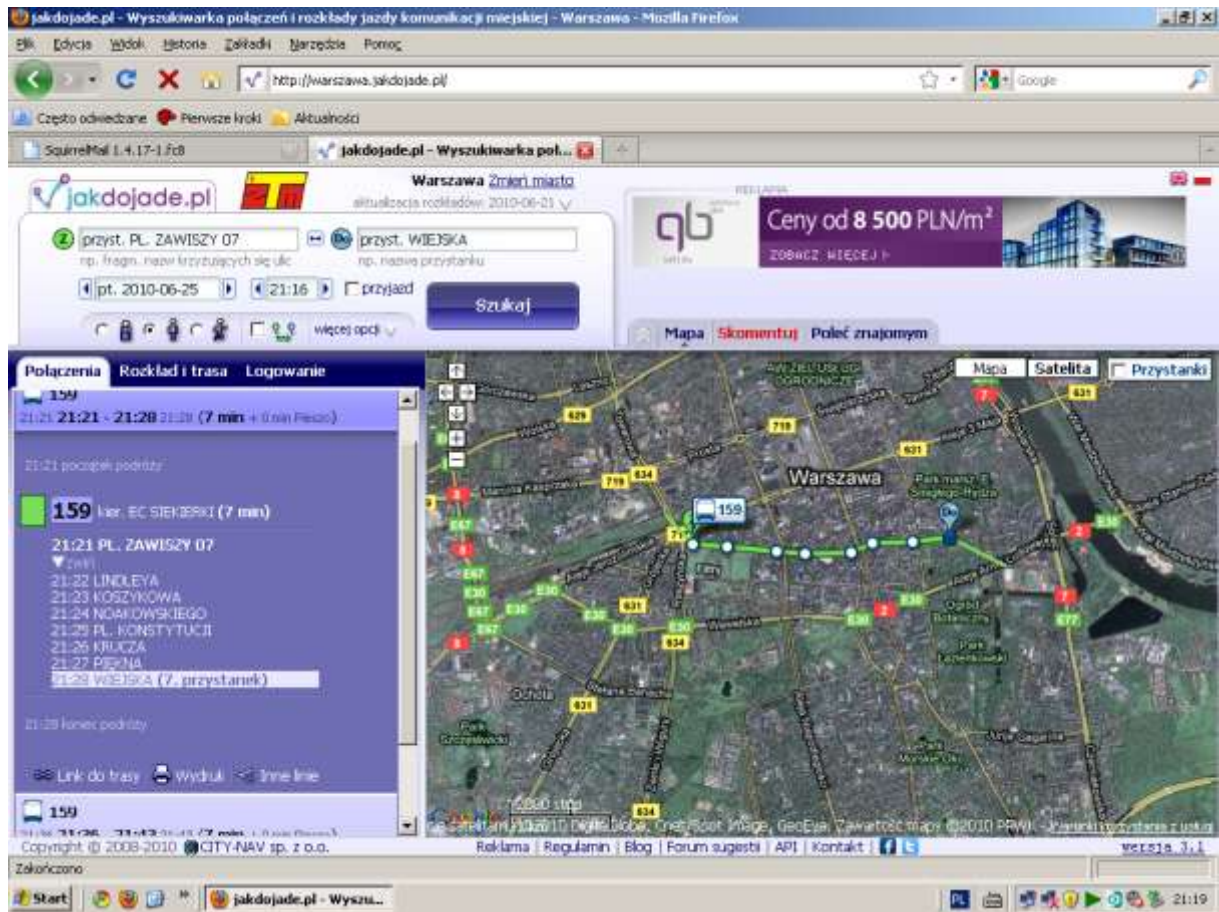
- Conference place

The Conference place address is Nowogrodzka 73. To get it go along Nowogrodzka street.

2. CONFERENCE MEALS AND CONFERENCE TRIP

Conference trip is organized to Żelazowa Wola, place of Chopin birth. Sightseeing starts from the Campanille Hotel (on the corner of Plac Zawiszy and Towarowa Street), on Sunday, at 14.00. Żelazowa Wola is situated about 1 hour and half from Warsaw and we will go there by coach. The conference trip will finish about 18:30 (6:30 p.m.).

After that we will have **dinner at 7.30 p.m. in the restaurant “Hawelka”, 4/6/8 Wiejska Street** (7 bus stops from Conference Venue). We will get to Hawelka by public transport from bus stop Zawiszy Square (line 159).



Source: warszawa.jakdojade.pl

159 - LINIA ZWYKŁA

Przystanek: **PL. ZAMISZY 07** --> **EC SIEKIERKI**

DZIEŃ POWSZEDNI

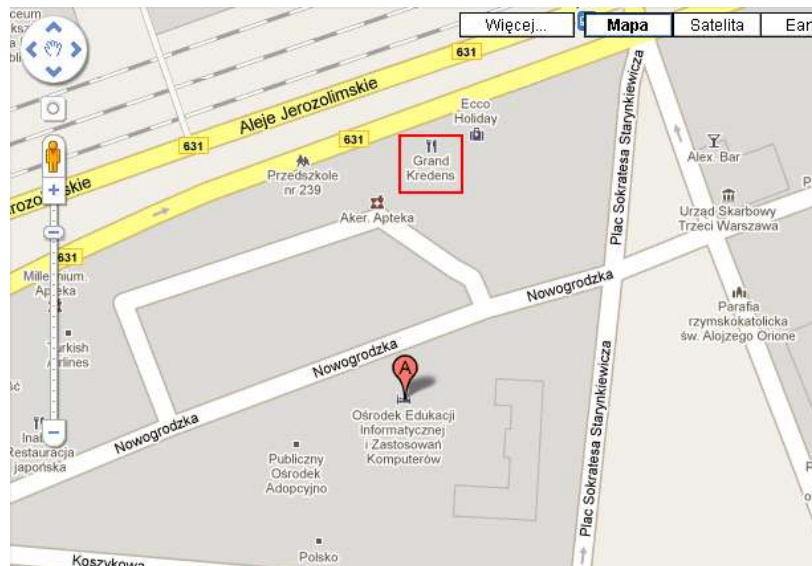
Godz.	Minuty
5	14 [44]
6	04 [20] [33] [45] [57]
7	[10] 25 [35] [45] [55]
8	[06] 18 [30] [45]
9	[00] [13] [28] [43] [58]
10	[13] [28] [43] [58]
11	[13] [28] [43] [58]
12	[13] [28] [43] [58]
13	[13] [28] [43] [58]
14	[13] [28] [43] 56
15	[08] [20] [32] [44] [56]
16	[08] [20] [32] [44] 56
17	[08] 20 [32] [44] [56]
18	[08] [20] [32] [44] [56]
19	[09] 21 [36] 51
20	[06] [21] [36] [51]
21	[06] [21] [36] [51]
22	[14] [44]
23	[14]

SUNDAY

Godz.	Minuty
5	[14] [44]
6	[14] [44]
7	[14] [44]
8	[09] [29] [49]
9	[09] [29] [49]
10	[09] [29] [49]
11	[09] [29] [49]
12	[09] [29] [49]
13	[09] [29] [49]
14	[09] [29] [49]
15	[09] [29] [49]
16	[09] [29] [49]
17	[09] [29#] [49#]
18	[09#] [29#] [49#]
19	[09#] [29#] [49#]
20	[08#] [28#] [48#]
21	[14#] [44#]
22	[14#] [44#]
23	[14#] [29#]

Source: www.ztm.waw.pl

Lunches: Grand Kredens, Al. Jerozolimskie 111 (100 m from Conference Venue)



Source: www.google.com/maps

Tea and coffee: in the hall.

Farewell buffet: in the hall

3. IMPORTANT ADDRESSES AND TELEPHONES

Conference place:

Computer Assisted Education and Information Technology Centre
73 Nowogrodzka Street

If you have any question or need any help do not hesitate to contact us.

Telephones:

Anna Grzybowska

Secretary of the conference

+48 22 626 83 90 (107) – in the Centre

Mobile: +48 516 837 941